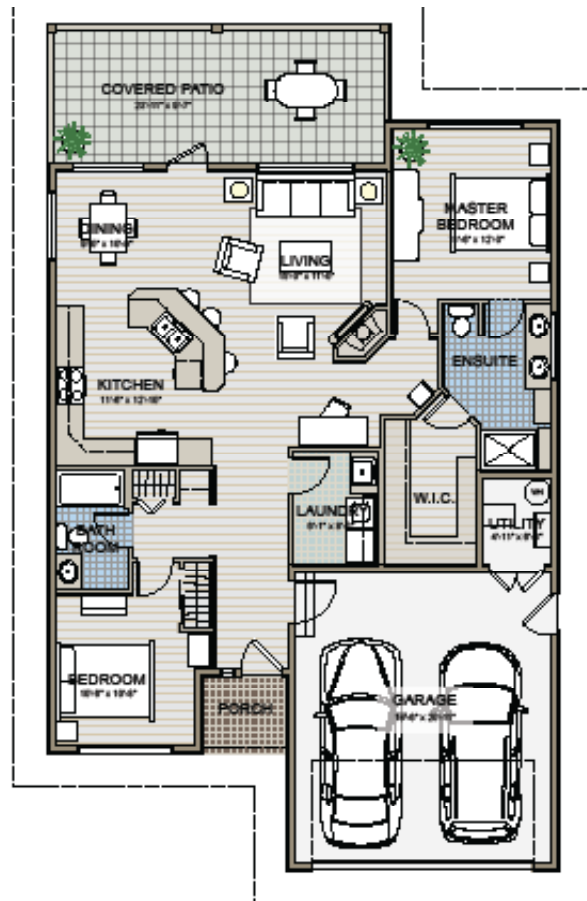
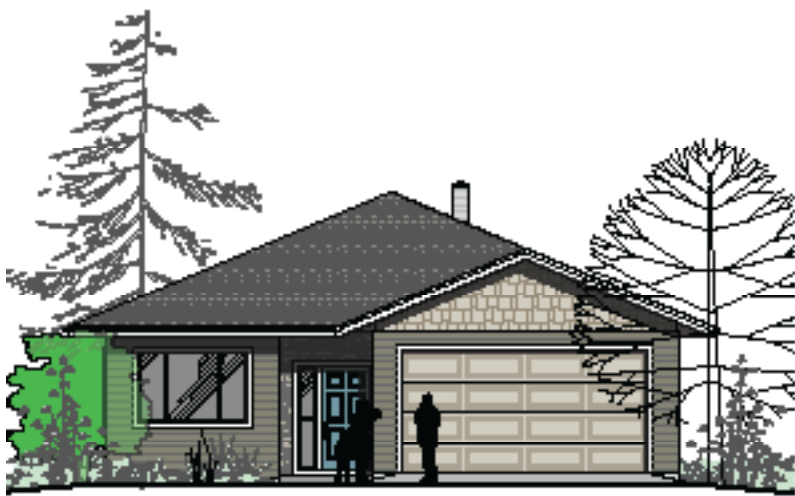


THE MAPLE



- 1272 sq. ft. on a crawl space or slab
- Large open living room, kitchen and dining area
- Gas fireplace with mantle
- Large covered patio
- Crescent shaped kitchen island
- Large master suite with 4 pc. ensuite and walk-in closet
- Second bedroom
- Full bathroom
- Covered front entry
- 2 car garage with access to the crawl space and utilities
- Spacious laundry room
- You choose the cabinets, vanities, countertops, flooring, light fixtures, paint colours and the outside colour scheme of your new home.

Call for pricing.

CHOOSE LOT # 1, 3, 10, 11, 24, 25, 29, 30, 31, 32 OR 33

HOMES BUILT BY...

STEVE McLEARN
250-803-2226

SHUSWAP COUNTRY BUILDERS

Pacific HOME WARRANTY
Registered Builder
25 Years Experience

steve@shuswapcountrybuilders.ca • ShuswapCountryBuilders.ca