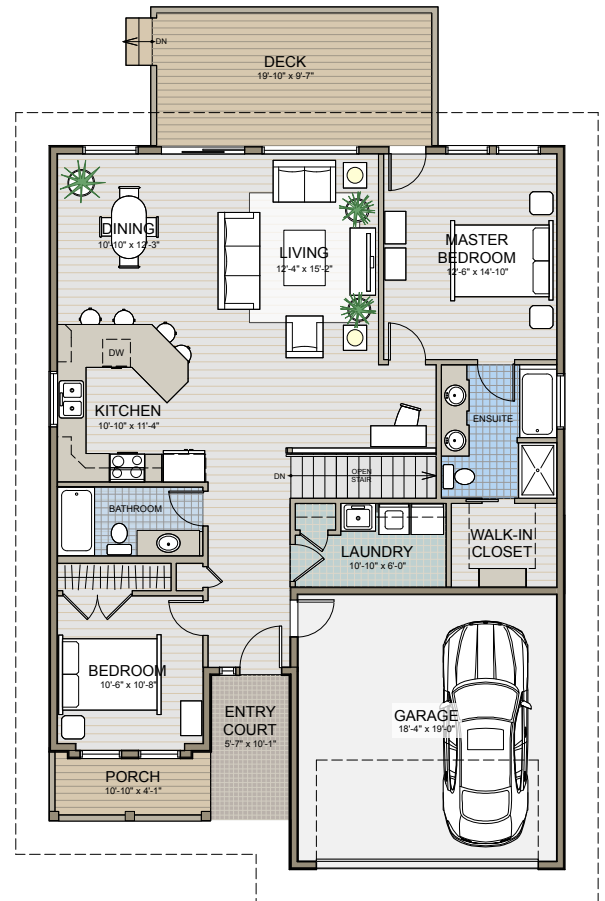
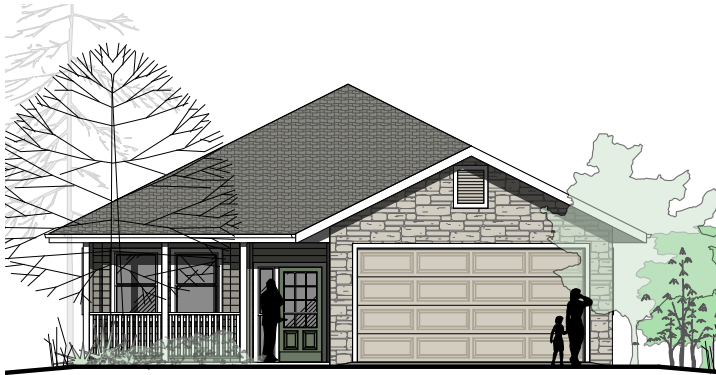


THE ASPEN

(With Basement)



- 1353 sq. ft. on the main floor with a full daylight or walk-out basement.
- Large open living room, kitchen and dining area
- Gas fireplace with mantle
- Large covered patio
- Peninsula island
- Large master suite with 4 pc. ensuite and walk-in closet
- Second bedroom on main floor
- Full bathroom
- Covered front entry
- Garage
- Large laundry room
- You choose the layout in the basement
- You choose the cabinets, vanities, countertops, flooring, light fixtures, paint colours and the outside colour scheme of your new home.

Call for pricing.

CHOOSE LOT # 6, 7, 8, 15, 16, 17, 18, 19, 20, 21, 22 OR 23

HOMES BUILT BY...

STEVE McLEARN
250-803-2226

SHUSWAP COUNTRY BUILDERS
Pacific HOME WARRANTY
Registered Builder
25 Years Experience

steve@shuswapcountrybuilders.ca • ShuswapCountryBuilders.ca